

Friday October 30th!

Don't miss Halloween fun; Art show winners announced

Halloween fun is in store for children up to 6th grade at the Empire Library, Friday, October 30, from 2:30 to 4:30 p.m..

Empire Elementary School's PTA has organized the event and FOEL is proud to help.

Prizes will be awarded for costumes in these categories:

- Most Original;
- Scariest;
- Cutest;
- Literary; and
- Character.

Judging will be at 3:30 p.m.

In addition there will be face painting, crafts, story telling, pumpkin bowling, treats, and Halloween safety information.

Art Show Winners !

And . . . it is all free to kids up to 6th grade. Funding is supported by PTA, FOEL and The Stanislaus County Library Foundation.

Announcements will also be made of the winners of the

Kindergarten Art show. Eight projects were judged and the top three entries will be announced and ribbons awarded. Winning projects will be displayed in the library for the next month

Again, Empire's Village Community Church has helped by distributing informational flyers to the community.

How Many Libraries?

Do you know about how many libraries there are around the country?

- a. 86,000
- b. 53,000
- c. 123,000
- d. 99,000

The answer is C – about 123,291 libraries. If you don't have a library card, stop in and get yours at the Empire branch today – it's **free!**

Help a great cause!

Food, Friends, Fun November 14th

Join the fun, and *bring your friends*, for a great spaghetti dinner at a fantastic price – and help the community, too.

Tickets are just \$6 and kids 5 and under eat free! It's at the Empire Elementary School from 5:30 to 8 p.m., Saturday Nov. 14.

Proceeds go to the Friends of the Empire Pool Committee

StoryTime



Nov 6th: Sweet Stuff

If You Give a Mouse a Cookie

Jamberry

Who Took the Cookie from the Cookie Jar?

The Bear Who Didn't Like Honey

Nov 13th: Cats n' Kittens

Kitten's First Full Moon

I Had a Cat

Clap Your Hands!

StoryTime is a free activity at 10:30 every Friday. Bring your children, grandchildren, nieces, nephews – even the neighbor kids. You will do them a great favor!

FOEL Bookmarks

Published in the interest of strengthened community / library relations by Friends of the Empire Library.
PO Box 822, Empire, CA 95391

Online: < http://www.stanislauslibrary.org/about_friends_empire.shtml >

For more information contact us at
209 / 578-3577 / jwsterling@comcast.net

Guidelines Important!

Donated Books Mean Money

Did you know that the Friends of the Library can raise significant money from the sale of used books? The Friends will sort through donated books to find the treasures that will stock our book sale.

While we appreciate the generosity of our patrons, we cannot accept all materials. Here are a few guidelines that will help make

your donations of the greatest help to your library.

What can be donated?

Most gently-used books and media are accepted on behalf of the Friends of the Library.

What cannot be accepted?

Magazines (including National Geographic)
Patterns and puzzles
Readers' Digest condensed books

Most encyclopedias, textbooks, or reference books over three years old

Any items previously owned by other libraries

Empty cases for CDs/ DVDs/ etc.

Where can I drop off my donations to the library?

Patrons are asked to bring donations for the Friends of the Empire Library book sale to 18 South Abbie in Empire.

☞ *Books and media materials must be boxed in sturdy boxes.*

☞ *Please do not bring you book donations in **bags** as our volunteers cannot handle these.*

Please drop books and materials off ONLY during week-day business hours.

What does the library do with these donations?

The materials are sorted and sold in order to raise funds to support programs and projects throughout the year. The Friends plan to sell a majority of the books at book sales that will be well publicized.

Why doesn't the library add these materials to the regular collection?

Unless an item is particularly rare, the cost in staff time to sort, catalog, and process it exceeds its face value. We simply don't have enough staff to handle all of the donations.

How do I make a donation (other than used items) to the

Can you pitch in and help out ?

The spaghetti dinner fund raiser organized by the Friends of the Empire Pool Committee generates money because many give so generously of their time and resources. Below is a list of needs for the dinner.

- ◆ 500 paper plates (10 1/2" oblong)
- ◆ 200 coffee cups
- ◆ creamers / sugar (for coffee)
- ◆ 600 napkins
- ◆ 500 plastic utensils (wrapped w/ salt & pepper)
- ◆ 30 table covers
- ◆ 100 take-out boxes
- ◆ 400 cans of soda
- ◆ 40 lbs spaghetti noodles
- ◆ 50 lbs ground beef
- ◆ 40 lbs mixed salad greens
- ◆ 3 cases spaghetti sauce (6 1 gallon cans per case)
- ◆ 200 bottles water

If you can donate any of these, please contact Betty Parker at 551-7969.

Book Review

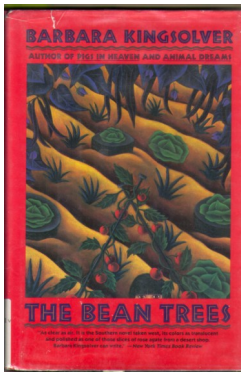
The Bean Trees

By Barbara Kingsolver

Taylor Greer grew up poor in rural Kentucky with two goals: to avoid pregnancy and to get away. She succeeds on both counts when she

buys a '55 WV and heads west. But by the time our plucky if unlikely heroine pulls up on the outskirts of Tucson, AZ, at an auto repair shop called Jesus Is Lord Used Tires that also happens to be a sanctuary for Central American refugees, she's "inherited" a 3-year-old American Indian girl named Turtle. What follows as Taylor meets the human condition head-on is at the heart of this novel about love and friendship, abandonment and belonging, and the discovery of surprising resources in apparently empty spaces.

Kingsolver went on to write such classics as "The Poisonwood Bible" (Oprah's Book Club), but this was her first – and undoubtedly one of her best.



*Available at the Empire Library.
Check it out today!*

Library? Can I donate a book in memory of a loved one?

Contact the Friends of the Library for more information.

Patrons can also consider becoming a member of the Friends of the Library. Friends members receive discounts at the book sales and there are many volunteer opportunities available. Funds raised through Friends memberships are used for library programs and services each year

NOTE: These guidelines were adapted from the book

"Even More Great Ideas for Libraries and Friends"

By Sally Gardner Reed and Beth Nawalinski of

Friends of Library USA

Published by Neal-Schuman Publisher, Inc.